

# Surrey Cat Centre visual story



This is our car park.  
All visitors, employees and volunteers can park here.  
The surface is gravel.



There is a disabled parking bay with a tarmac surface.



From the car park, all visitors, employees and volunteers can enter through the gate.



There are steps and a ramp up to the entrance to our reception.



Here is the door to our reception building.



When you come into reception, you can talk to our team.



Our employees and volunteers wear a blue uniform with a yellow logo.





Soon, our uniform will be changing.  
You might also see our employees and volunteers wearing these new uniforms.



These are our cat pens.  
We have six cat accommodation blocks.  
Four of them are on the path on the left.  
The other two are along the path on the right.



In each block, there is a corridor with six separate cat pens.



Most of the pens have one cat in.  
Some of them have two cats.  
A small number of pens have a whole family of cats.  
If you are meeting a cat, you will go into the pen with them.



When you have finished, you can return to reception to talk to our team.

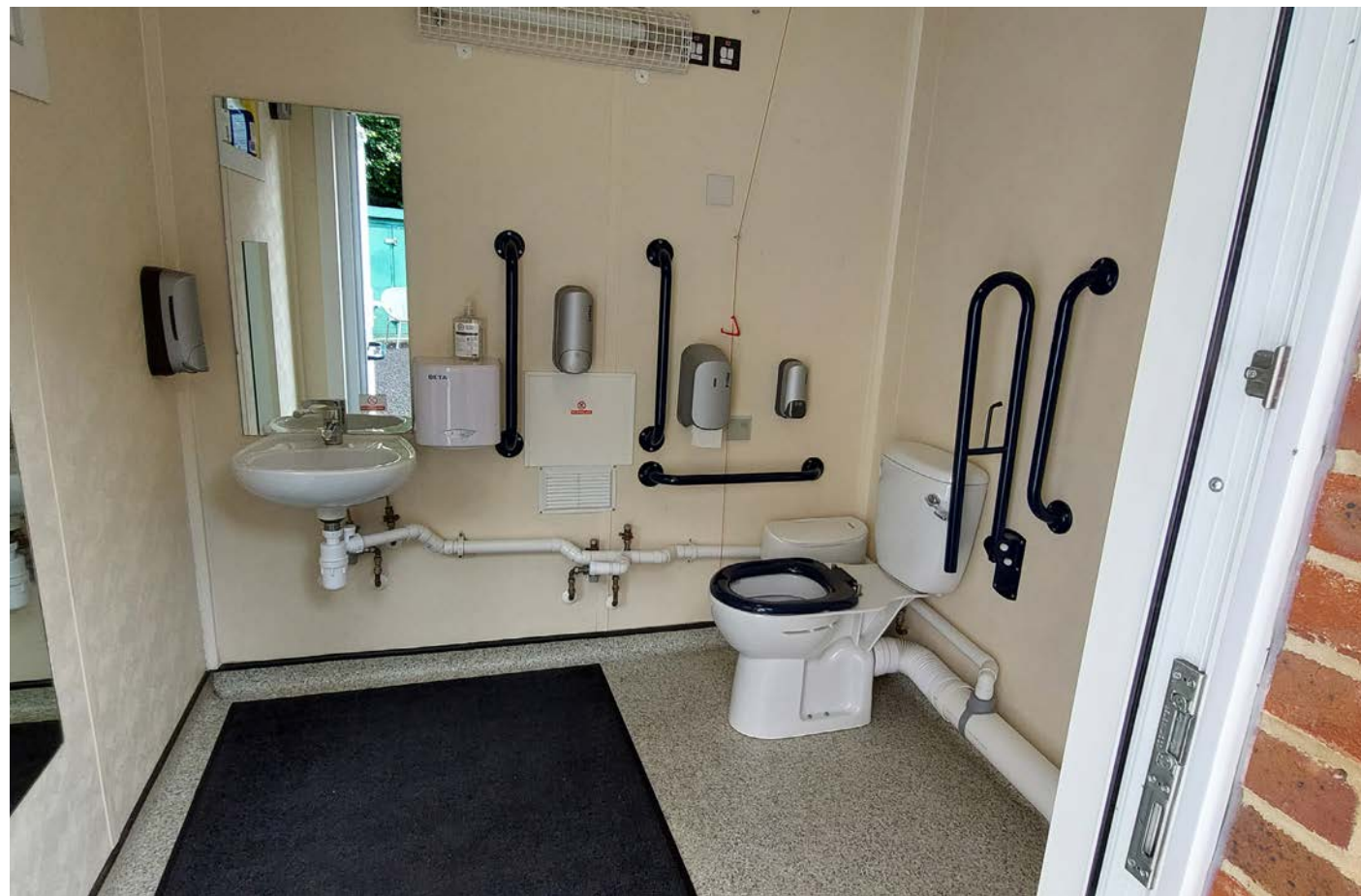


There is a toilet near the entrance, opposite the reception building. This toilet has wheelchair access and a hand towel on a roll.



There is another toilet past reception, on the same side as the cat pens.

This toilet has wheelchair access and a hand dryer.



If you are an employee, volunteer or work experience student, you will also use the staff-only parts of our site.





You will be able to use the staff room during your breaks.  
If you prefer, you can sit outside.



Our feed room is where we store the cat food, dish up the meals for the cats, and wash up the food bowls.



The tray wash is where the cleaning equipment is stored. We wash litter trays and dirty laundry in here.



Spare cat litter is stored in the small metal shed near to reception.



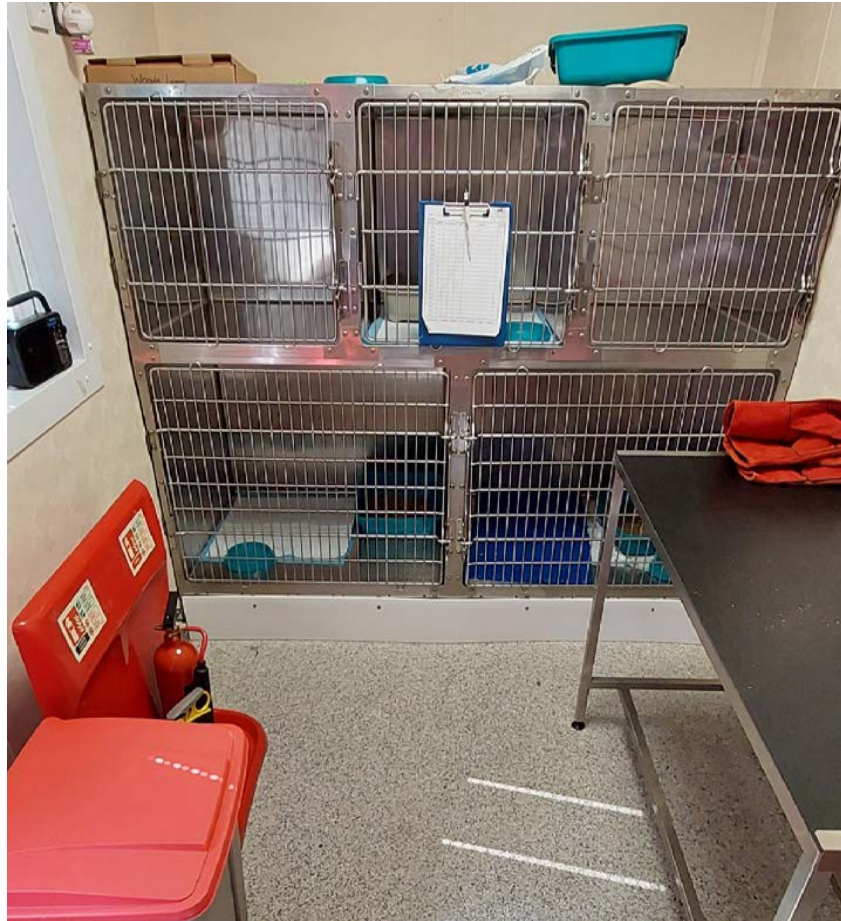
We have two large sheds to store outdoor items such as the gazebos we use at our events.



The vet room is used to store medicines.  
We also use this room when our vet visits.  
Work experience students usually help with vet day.



At the back of the vet room, there are some small cat cages. We do not use these cages very often, but there are sometimes cats in here too.



# Do you have any more questions about your visit to the Surrey Cat Centre?

**Contact us by**

Phone: 01428 604 297

Email: [enquiries@haslemere.cats.org.uk](mailto:enquiries@haslemere.cats.org.uk)

